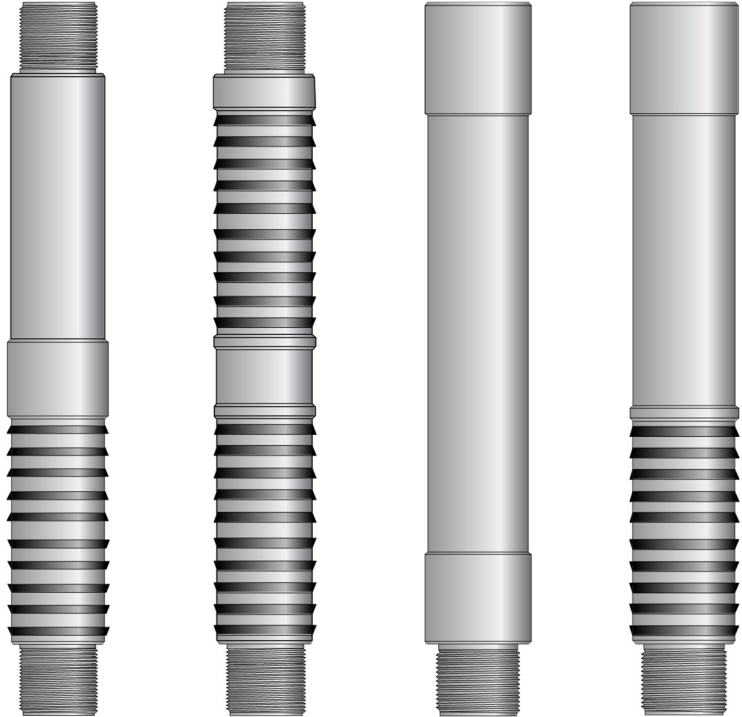


## LATCHING SEAL ASSEMBLIES

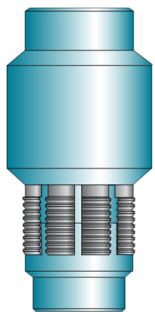
### LATCHING SEAL ASSEMBLIES

Any combination of these four seal assemblies work together in any sequence to accommodate any length of seal bore. Seal assemblies may also be used with a variety of seal packages for any type of environment.



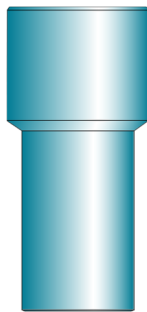
## ASSORTED

### ASSORTED



#### **Latch**

Used as top sub of seal assembly to anchor seal to packer assemblies



#### **Locator**

Used as top sub of seal assembly when it is not necessary to anchor seal assembly to the packer.



#### **Mule Shoe**

Used as the bottom cap of most seal assemblies